
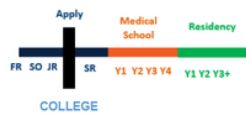


PATHWAYS TO MEDICINE




MEDICAL SCHOOL TIMELINE



Apply Medical School Residency
FR SO JR SR Y1 Y2 Y3 Y4 Y1 Y2 Y3+
COLLEGE

Image: utsa.edu



MEDICAL SCHOOL CURRICULUM

- 4-year program
- Training organized into two parts: pre-clinical (Years 1-2), and clinical (Years 3-4)
- **Pre-clinical phase:**
 - Basic medical concepts, the structure and functions of the body, diseases, diagnoses, treatment concepts, medical histories.
- **Clinical phase:**
 - Clinical rotations: basic instruction and hands-on experience with patients in the major medical specialties.
 - Curriculum varies for each medical school
 - Review the "About the Curriculum" section in the Medical School Admission Requirements.
 - Medical school graduation (Doctor of Medicine, MD)
 - Residency (3-7 years)
 - +/- fellowship training programs (1-3 years)
 - Fellowships in a subspecialty area

Pathways to Medicine

Program Overview

Summer 2026

Location: Zoom Virtual Classroom

5 Class Dates (2 Fridays & 3 Saturdays)

7/31, 8/7, 8/15, 8/22 and 8/29

(Session A: 12pm to 3pm PST OR Session B: 3pm to 6pm PST)



Pathways to Medicine Program (PtM)

This summer, Pathways to Medicine (PtM) will introduce college undergraduates and adult learners to the journey toward becoming a physician. Across 5 virtual sessions, participants will engage in health professional speaker talks, career workshops, and interactive presentations. We'll explore how academic coursework, clinical and research experience, leadership, and service roles can all support your journey toward medical school. We'll also cover how the medical school application process is structured through entrance exams, application platforms, and interviews. Students will learn how medical school typically unfolds over 4 years through classroom learning, clinical training, and patient care. We'll also explore the licensure exams, residency training, and fellowship opportunities that shape the transition into physician practice. By the end of PtM, you will have a clearer understanding of the pathway to becoming a physician and begin building a personalized student-to-physician plan based on your goals.

Preparation & Pathways into Medical School

Students will examine the experiences that shape effective future physicians, including academic coursework, research & clinical experience as well as service & leadership commitments. We gain a view of successful pathways into medical school.

Medical School Applications & Entrance Exams

Students will gain an understanding of the medical school application, admissions and entry process. This includes learning about entrance exams, application components, interviews, and strategies for developing a strong application roadmap.

The Medical School Student Experience

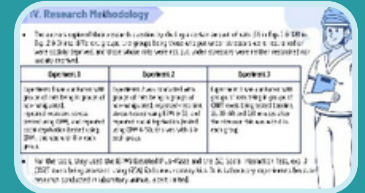
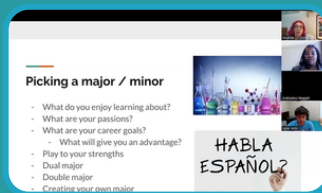
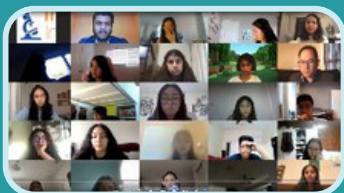
Students will explore the structure of medical school, clinical training, and patient care while developing an understanding of clinical reasoning, professionalism, communication, and teamwork in healthcare.

Exploring Physician Specialties & Career Exploration

Students will examine a variety of medical specialties and learn how physicians align their interests, strengths, and goals with different career paths in medicine. Students will explore residency, fellowship training, leadership, research, entrepreneurship, and lifelong professional development.

Residency Training & Licensure

Students will learn about licensing exams, residency applications, interviews, and the Match process while exploring the transition from medical student to practicing physician.



MEET YOUR INSTRUCTOR

Shari Webber is a science professor with more than fifteen years of experience in teaching and undergraduate pre-health advising. She holds a B.S. in Biology Pre-Med as well as a M.Ed. in Secondary Education Biology with a Microbiology concentration, both from Alabama A&M University. Her background includes nursing education coursework and clinical rotation training. As an instructor and clinical education supervisor, Shari has taught a variety of science courses. Shari has also advised hundreds of students in navigating the academic, professional and career pathways that lead to careers in science education, medicine and nursing. Through PtM, Shari is committed to helping aspiring physicians navigate the journey from student to physician.



Shari Webber
M.Ed.

WEEK ONE Friday, July 31st

Preparing for Medical School Admission: Am I Ready?



Students will explore how academic coursework, research, clinical experiences, volunteering, physician shadowing, and leadership connect to medical school goals. The workshop will cover science GPA, prerequisite coursework, and the differences between MD, MD-PhD, and DO programs. Students will review physician career pathways, learn what medical schools value beyond grades and test scores, consider different undergraduate majors, and compare admission requirements and applicant profiles across several medical schools as future applicants.

WEEK TWO Friday, August 7th

My Journey to Medical School & Beyond: Perspectives on Multiple Specialties



Dr. Carl Willis MD
Doctor of Oncology, Hematology
and Internal Medicine

Ready to discover what it really takes to become a physician? Join Dr. Willis as he shares his remarkable journey serving as a physician in the U.S. Army, completing elite training at Walter Reed, the National Naval Medical Center, and Johns Hopkins University School of Medicine. Students will gain insight into medical school, residency, fellowships, oncology and hematology specialties, military medicine, and the dedication required to build a successful career as a physician and leader in healthcare.

Entrance Exams and Applying to Medical School: Getting Accepted!



Students will explore the medical school application roadmap. This includes learning about the MCAT exam, and specifically its structure, scoring, study timelines, test dates, score releases, and when to take the exam. The workshop will also introduce the AMCAS and AACOMAS applications. We will explore the importance of personal statements, recommendation letters, and the interview process. We will also discuss financial aid, scholarships, and the overall application cycle.

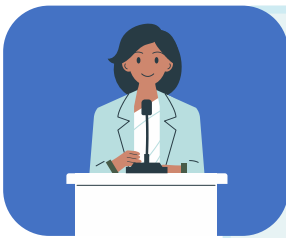
WEEK THREE Saturday, August 15th

Surviving Medical School: Student to Physician



This session takes students inside the daily life and expectations of medical school, showing how future physicians grow from learners into clinical decision-makers. Students will explore how medical education is organized over four years, covering the difference between pre-clinical versus clinical years. We will discuss specific activities that are common in medical school training such as anatomy and cadaver labs, studying pharmacology foundations and learning medical terminology. We will also cover how medical schools lay the foundation for patient communication, professionalism and developing the physician's role as a leader in healthcare. The workshop will highlight the habits, mindset, and support systems needed to manage rigorous training.

My Med School Experience: Student Perspectives Panel



In this conversation, current medical students will offer a candid look at the realities behind the white coat. The panel will describe how they adjusted to fast-paced coursework, exams, clinical expectations, peer support and personal balance. Students will hear what surprised them, what challenged them and what helped them succeed. The session will include open Q&A about study habits, patient encounters, campus life, wellness, and the personal growth that happens during medical training.

WEEK FOUR Saturday, August 22nd

Becoming A Doctor & Exploring Infectious Diseases in Medicine: Perspectives of an Osteopathic Physician



Dr. Andrew Sou, DO
Doctor of
Osteopathic Medicine

Dr. Andrew Sou, DO, will introduce students to the path of becoming an osteopathic physician and the exciting world of infectious diseases. Drawing from his work with medical students, residents, and infectious disease fellows, Dr. Sou will share how physicians diagnose, treat, and study illnesses caused by microbes. Students will gain insight into medical training, specialty development, patient care, and the curiosity that drives physicians in this rapidly evolving field of medicine.

Clinical Rotations and Medical Specialties: Finding Your Fit



Students will explore how clinical rotations help future physicians experience different areas of medicine and identify the specialties that align with their goals. This session will discuss various common specialties such as Pediatrics, Family Medicine, Surgery, Emergency Medicine, Psychiatry, Radiology, Anesthesiology, Cardiology, and other specialties. Students will also learn about patient presentations, SOAP notes, physician rounds, interdisciplinary healthcare teams as well as how lifestyle, patient populations and work environments influence specialty choice. By the end of the session, students will better understand how clinical rotations shape a physician's development.

WEEK FIVE

Saturday, August 29th

Licensing Exams, Residency, and Match Day: Becoming a Doctor



Students will explore the major milestones that move medical students from graduation to residency and physician licensure. This session will explain board exam pathways, including USMLE for MD students and COMLEX for DO students, along with preparation strategies, residency applications through ERAS, interviews, Match Day, state licensing, credentialing, and what happens if an applicant does not match. Students may review board-style questions, design a preparation plan, participate in a mock Match Day activity, or reflect on MD and DO pathway options.

Career Launch, Residency, Fellowship, and Beyond: From Doctor to Specialist



This workshop looks beyond medical school to show how physicians build long-term careers through residency, fellowship, specialization, and continued professional growth. Students will learn about residency expectations, program length, fellowship opportunities, subspecialty training, academic medicine, private practice, hospital employment, physician leadership, salary considerations, work-life balance, burnout prevention, and entrepreneurship in medicine. Students will also consider how specialty choice shapes lifestyle and career direction through activities such as a ten-year career plan, mock residency interview, or specialty pathway map.

Life on the Frontlines: Resident Perspectives Panel



This panel helps students understand the transition from medical school to residency through the voices of current resident physicians. Residents from different specialties will share what training looks like after graduation, including daily responsibilities, patient care, supervision, long hours, teamwork, and professional growth. Students will hear how residents adjusted from classroom learning to hands-on clinical practice and what they wish they had known earlier. The session will offer a realistic look at this important stage between medical student and attending physician.

PtM curriculum and speakers are subject to potential change. Email us at info@impactinternships.org with any content related questions about PtM. Screenshot photos from pages 1 & 2 are scenes from our non-profits existing high school health science program (2019 - 2026).